

OPERATING & DESIGN PARAMETERS

RATING: 600#
 OPERATING PRESSURE: 1000 to 1500 kPa
 OPERATING TEMPERATURE: 5 °C
 GAS FLOW RATE: 750-1000 MSCPD
 COND. FLOW RATE: 2-3 BBL/D
 WATER FLOW RATE: 2-3 BBL/D
 GAS GRAVITY: 0.65-0.69
 WATER GRAVITY: 1.00
 COND. GRAVITY: 0.72-0.74
 H2S CONTENT: 0%
 CO2 CONTENT: <1%

V-1000 INLET SEPARATOR
 SIZE: 300mm x 1524mm s/s
 DESIGN: 9929 kPa x -29/54 °C
 1.6 mm C.A.
 MANUFACTURER: RUSHTON

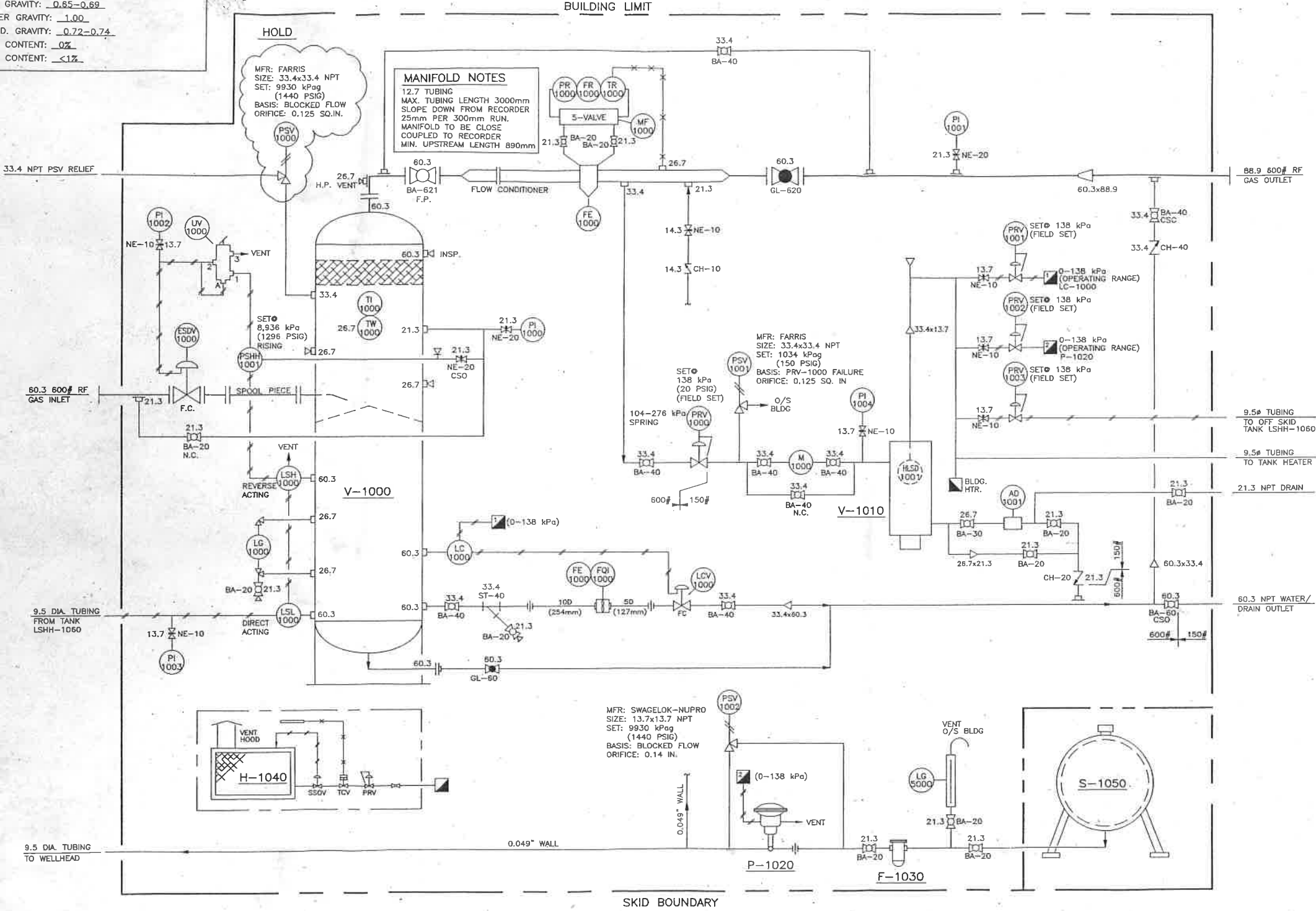
V-1010 FUEL GAS SCRUBBER
 SIZE: 200mm x 610mm s/s
 DESIGN: 1034 kPa x -29/38 °C
 1.6 mm C.A.
 MANUFACTURER: RUSHTON

P-1020 METHANOL PUMP
 SERIES: BRUIN 5103LP
 PLUNGER DISPLACEMENT: 9.5mm
 RATE MAX: 0.0025 TO 0.076 m³/DAY
 24.133 kPa MAX. D.P.

F-1030 FILTER
 MAKE: SIMTEK
 MODEL: SIX200H-1-50002
 MFR: CGI THERMAL
 SPIN ON HEAD c/w
 ELEMENT 70/35

H-1040 BUILDING HEATER
 DUTY: 16,000 BTU/HR (NAT. GAS)
 MFR: CCI THERMAL
 12 VDC START-UP
 MODEL: MKII 24 x 24

S-1050 METHANOL TANK
 MAKE: WESTEEL DOUBLE WALL
 SIZE: 1067 mm OD x 1937mm
 CAPACITY: 1.89 m³



TAG #s	QTY	DESCRIPTION
AD 1001	1	Armstrong 11LD auto drain trap, SS body & internals, 26.7 x 21.3 NPT conn.
ESDV 1000	1	60.3 600# RF Fisher 667-ET control valve, eq% trim c/w size 45 actuator, F.C., 8-15 psi bench set
FE 1000	1	60.3 600# RF Daniel Simplex orifice fitting, c/w 60.3 Sch 80 AGA 3C meter run, beveled outer ends, (1) 21.3 3000#, (1) 26.7 3000#, and (1) 33.4 3000# TOL downstream connections
FQV FE 1000	1	33.4 x 33.4 NPT Primary Flow Signal turbine meter, c/w PVC totalizer FW-012-P and pick-up
FR 1000	1	Barton 202-E 3-pen dry flow recorder, 0-100" W.C., 0-3,445 kPa static pressure, -42-71° C temperature, programmable battery operated chart drive, c/w charts and ink (Reconditioned)
HLSD 1001	1	Loures and Gauges LG12, 60.3 NPT internal high level shutdown valve
LC 1000	1	Fisher L2 direct-acting liquid level controller, 60.3 NPT connection, vertical PVC displacer, sweet instrument gas
LCV 1000	1	33.4 NPT Fisher D2 Flopro control valve, 9.5mm adjustable trim, F.C., 0-138 kPa signal, Nace
LG 1000	1	Penberthy 1RL9 reflex level gauge, 321 visible length, c/w 26.7 NPT 330J gauge valves
LG 5000	1	Loures and Gauges SG48BC calibrated rate/level gauge
LSH 1000	1	Fisher L2 reverse acting level controller, 60.3 NPT
LSL 1000	1	Fisher L2 Direct acting level controller, 60.3 NPT
M 1000	1	Romet RM-30, 48.3 NPT rotary gas meter, m3 local readout
MF 1000	1	5-valve manifold, Century CM5-3-F44T-AB-V, C.S.
PI 1000/1001	2	0-10,342 kPa, 100mm face, dual scale, S.S., L.F., 21.3 L.M., Nuova Fima 18/3A-421, Nace
PI 1002/1003	2	0-414 kPa, 85mm face, dual scale, Dry, 13.7 L.M., CPW 105 Hydropak
PI 1004	1	0-1379 kPa, 65mm face, dual scale, D.F., 13.7 L.M., Nuova Fima MI-63-14
PRV 1000	1	33.4 NPT Fisher 627 regulator, steel body, 104-276 kPa range, 2.4mm (1/8") S.S. trim, nylon disk
PRV 1001/1002/1003	3	13.7 NPT Fisher 67 CFR regulator, 0-241 kPa range
PSHH 1001	1	HLR 7970 pressure sensor, 2000-9929 kPa range, 3 way, auto reset, pressure balance spool, set @ 8936 kPa
PSV 1000	1	33.4 x 33.4 NPT Farris Model 27DA33-M20 relief valve set @ 9930 kPa (1440 psig), Nace primary zone (HOLD)
PSV 1001	1	33.4 x 33.4 NPT Farris Model 27DA33-M20 relief valve set @ (1034 kPa) 150 psig, Nace primary zone
PSV 1002	1	13.7x13.7 NPT Swagelok Nupro SS-4R3A1-C relief valve c/w 177 R3A-K1-C spring, 5171-10, 342 kPa range, set @ 9929 kPa (1440 psig)
TI 1000	1	-40 to 70 °C, dual scale, 21.3 NPT C.B.M., bimetallic, 80 dial, 100 stem, Gaugelech GT3
TW 1000	1	21.3 x 26.7 x 101.6mm lg 316 SS thermowell
UV 1000	1	Amot 4057D025H2 13.7 NPT 3-way switching valve type 'CP' c/w overlap
BA 621	1	60.3 600# RF full port ball valve, Nutron T3-F20R06-B, Std.
BA 60	1	60.3 NPT ball valve, Nutron T3-R20S30-B, 3000# WOG Std.
BA 40	8	33.4 NPT ball valve, Nutron T3-R10S30-B, 3000# WOG Std.
BA 30	1	26.7 NPT ball valve, Nutron T3-R07S30-B, 3000# WOG Std.
BA 20	12	21.3 NPT ball valve, Nutron T3-F05S30-B, 3000# WOG Std.
CH 40	1	33.4 NPT piston check valve, Navco CP-R10S08A8, Class 800# WOG
CH 20	1	21.3 NPT piston check valve, Navco CP-R05S08A8, Class 800# WOG
CH 10	1	13.7 NPT piston check valve, Nupro B-4CP2-1, 3000 psi MAWP
GL 620	1	60.3 600# RF globe valve
GL 60	1	60.3 NPT globe valve, Class 800
NE 20	3	21.3 NPT needle valve, Century CM2-3-F44T-B-V
NE 10	7	13.7 NPT needle valve, Century CM2-3-F22T-BV, Sweet
ST 40	1	33.4 NPT Y-strainer, Sure Flo YT6
F 1030	1	Simtek spin on filter head c/w element
H 1040	1	16,000 BTU/HR input Catadyne heater, c/w regulator, thermostat, SSOV, protection grill, 12 VDC start, vent hood and 9150mm cable MK II Style (natural gas)
P 1020	1	Bruin 5103LP Methanol injection pump 0.0025 TO 0.076 m³/DAY
S-1050	1	Westeel 1.89m³ chemical tank, double wall c/w cradles and ventfill cap
V 1010	1	219.1 x 610 S/S x 1034 kPa vertical scrubber

NOTES:
 - ALL INST. TUBING TO BE 9.5 DIA. ELECTROGALVANIZED c/w CADMIUM PLATED CARBON STEEL SWAGelok TUBE FITTINGS.
 - VENT ALL NORMALLY VENTING INSTRUMENTS LOCALLY OUTSIDE BLDG. WALL.
 - CHART RECORDER ON A STAND ALONE SUPPORT STRUCTURE
 - P-1020 DISCHARGE TUBING TO BE 0.049" WALL

REV	DESCRIPTION	DATE	BY

CUSTOMER: DEVON CANADA CORPORATION LOCATION: 102/08-06-042-27 W4M

c/o OPTIMA ENGINEERS & CONSTRUCTORS MORNINGSIDE

MECHANICAL FLOW DIAGRAM

323.9 OD SEPARATOR SKID PACKAGE (SWEET)
 C-2426B.VS

DATE: 04/25/05 DRN BY: Y.P. SCALE: NTS CHKD BY: APPRD BY: DWG NO: C-2426-B2 REV: 0

(1) REQ'D
 TIME CARD
 C-2426-PP

